

H2A Compliance & Modular Floor Plan Guide

A Technical Manual for Federal Workforce Housing Procurement

Section 1: H-2A Compliance Overview

To secure H-2A certification, employers must provide housing that meets the rigorous safety and health standards of the **Department of Labor (DOL)** and the **Occupational Safety and Health Administration (OSHA)**.

The Fundamental Compliance Pillars:

1. **Sleeping Facilities:** At least 50 square feet of floor space per occupant. Ceilings must be at least 7 feet high.
 2. **Sanitary Facilities:** Minimum of one toilet for every 15 occupants. One shower head with hot and cold running water for every 10 occupants.
 3. **Food Preparation:** Units must provide either a centralized kitchen facility or private cooking areas with adequate refrigeration and storage.
 4. **Ventilation and Screening:** All exterior openings must be screened with at least 16-mesh material to prevent insect entry.
 5. **Fire Safety:** Every sleeping room must have a second means of escape (egress window) and compliant smoke detection.
-

Section 2: High-Capacity Modular Floor Plans

Our inventory is curated to maximize bed count while exceeding federal square footage requirements. Below are the primary configurations for H2A and Industrial Workforce deployment.

The 7-Bedroom / 7-Bathroom "Industrial Suite"

- **Dimensions:** 16' x 76' (Standard)
- **Capacity:** 7-14 personnel (depending on bunk configuration).
- **H2A Advantage:** 100% private en-suite bathrooms. This exceeds the DOL minimum of 1:15 toilet ratios, drastically reducing site maintenance and improving worker morale.
- **Compliance Marker:** Features 2x4 interior walls for sound attenuation and residential-grade HVAC.

The 8-Man Shelter (High-Efficiency)

- **Dimensions:** 16' x 80'
- **Layout:** 8 Private Bedrooms with 8 Private Baths.
- **Strategic Use:** Best for senior contractors or supervisors requiring individual privacy and a quiet environment for shift-work sleep cycles.

The 4-Man ADA Studio

- **Dimensions:** 16' x 80'
 - **Compliance:** Fully equipped for accessibility standards.
 - **Features:** Wider hallways and reinforced bathroom grab bars to meet federal "Universal Design" requirements for inclusive workforce housing.
-

Section 3: Rapid Deployment Site Requirements

Deployment of these assets on your farm or project site requires specific infrastructure to remain compliant.

- **Foundation:** We recommend engineered steel piers for long-term stability and to prevent moisture accumulation beneath the unit (a common OSHA violation).
 - **Utility Load:** 200-Amp electrical service is required to support multi-room HVAC and kitchen appliances simultaneously.
 - **Water/Waste:** Centralized manifold systems are utilized for rapid hookup to municipal or septic systems.
-

Section 4: Why Procurement Matters

As veterans in the housing market, we help provide the documentation required for your **Capability Statement** and Federal Bids.

- **NAICS 721310:** Workers' Camps and Workforce Lodging Assets.
- **NAICS 332311:** Prefabricated Modular Building Infrastructure.
- **Compliance:** FEMA Wind Zone 3 and IBC Commercial Modular Standards.

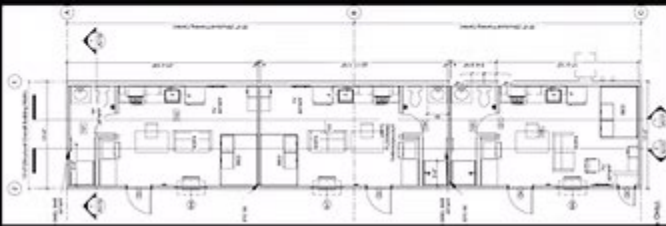
14x70 5-Person Sleepers

Fully Furnished with Beds, Desk, Nightstand, TV, Minifridge, and Microwave



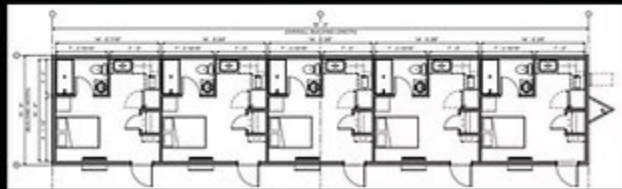
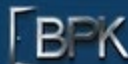
THE 3 MAN STUDIO

13x70 3/3 Wheeled Studio Unit



THE 5 MAN STUDIO

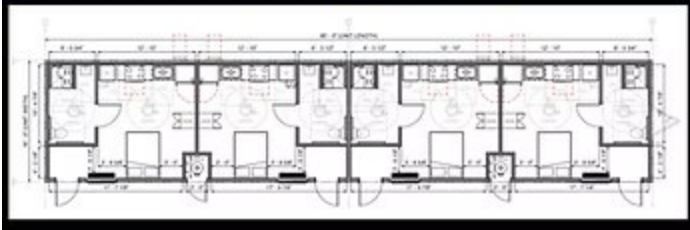
16x76 5/5 Sleeper Studio



THE 4-MAN ADA-STUDIO

16x80 4 PERSON STUDIO

- 8ft Sidewalls
- Metal Siding-Wood Frame
- HVAC Units
- White Vinyl Low-E Windows
- Recessed Can Lights
- Vinyl Floor Tiles
- 200 AMP Exterior Panel
- Full Size Beds



THE RANGER LODGE

14x75.5/5 STUDIO WHEELED MODULAR SLEEPER

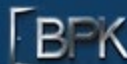
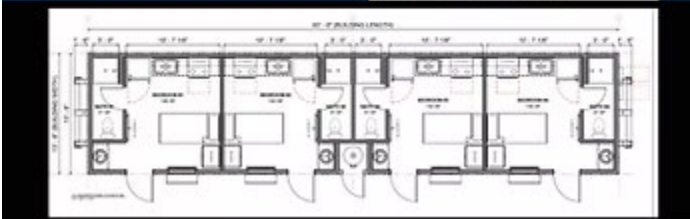
- 8ft Sidewalls
- Vertical Siding-Wood Frame
- Wall PTAC Units
- White Vinyl Low-E Windows
- Recessed Can Lights or Ceiling Fans
- Vinyl Floor
- Pine Trim
- 200 AMP Exterior Panel
- Metal Roof
- Optional Cabin Furnishings



THE SMALL RANGER LODGE

14x60 4/4 STUDIO SKID SLEEPER

- 8ft Sidewalls
- Vertical Siding-Wood Frame
- Wall PTAC Units
- White Vinyl Low-E Windows
- Recessed Can Lights or Ceiling Fans
- Vinyl Plank Floor
- Pine Trim
- 200 AMP Exterior Panel
- Metal Roof
- Optional Cabin Furnishings



THE INFANTRY 4 SLEEPER



16X76 4x4 SINGLEWIDE

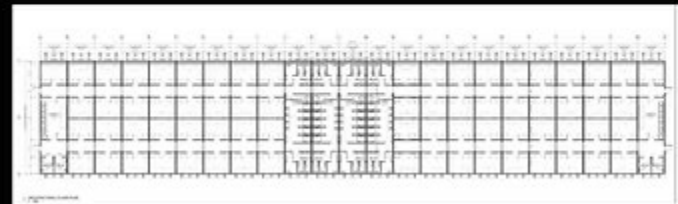
- 8ft Sidewalls
- Flat Ceilings
- Thermal Pane Windows
- 55 Year Siding
- Steel Faucets
- Porcelain Sinks
- Shingle Roof
- 2x4 Interior Insulated Walls



THE 140 MAN DORM



276x50 DORM, Men and Women Restrooms and Showers, Laundry at both ends.



THE MICRO-HOSPITAL AID

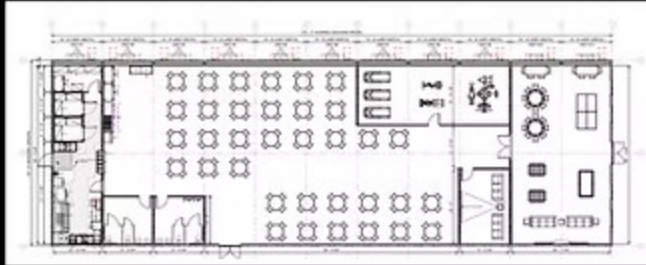


8358 Square Feet, Patient Rooms, Reception, Storage, Lab, Waiting Area, and Utility Room



THE CREW LOUNGE 2

152x50 Full Kitchen, Dining, Laundry, Gym and REC



THE 8-MAN SHELTER

16x80 8 PERSON SLEEPER



- 8ft Sidewalls
- Metal Siding-Wood Frame
- HVAC Units
- White Vinyl Low-E Windows
- Recessed Can Lights
- Vinyl Floor Tiles
- 200 AMP Exterior Panel
- Full Size Beds



THE 4-MAN SLEEPER

14x56 4 PERSON SLEEPER



- 8ft Sidewalls
- Metal Siding-Wood Frame
- HVAC Units
- White Vinyl Low-E Windows
- Recessed Can Lights
- Vinyl Floor Tiles
- 200 AMP Exterior Panel
- Full Size Beds

